

# CATARAQUI RIDGE

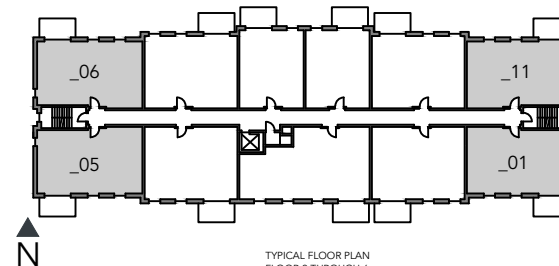
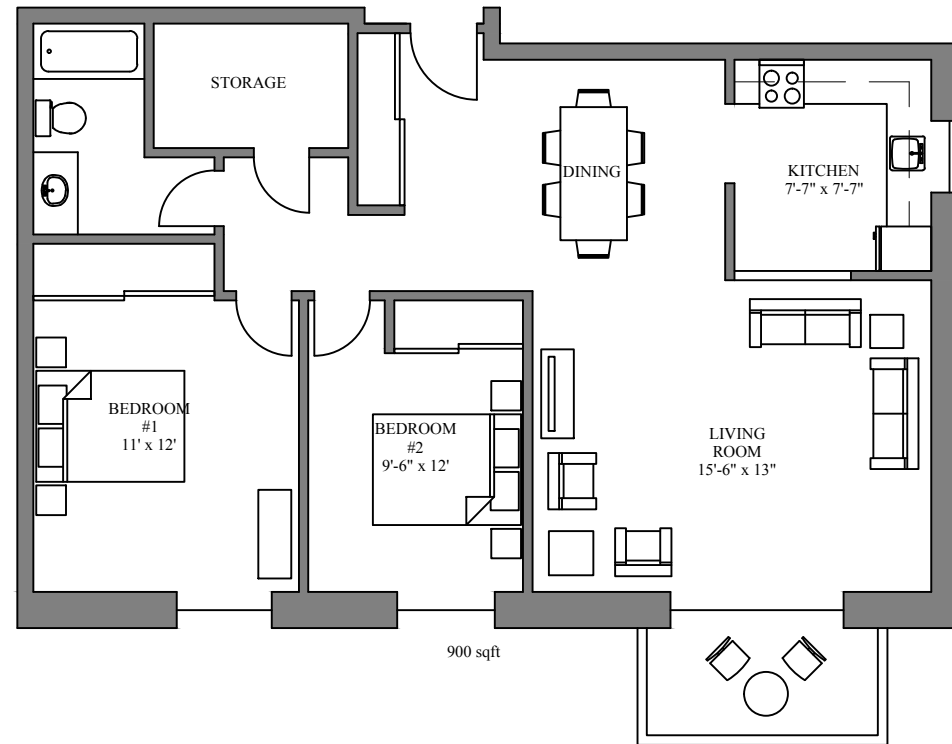
267 THE PARKWAY

PRICE:

AVAILABLE:



[WWW.CJMPROPERTY.NET](http://WWW.CJMPROPERTY.NET)



TYPICAL FLOOR PLAN  
FLOOR 2 THROUGH 6

## SUITE FEATURES

- 2 Bedroom + 1 bath
- Heat, water & electricity included
- Parking space included
- In-suite storage
- Private balcony
- Pet friendly
- New Elevator
- Laundry Facilities
- Wheelchair accessible

## APPLICATION

- 1-year lease
- First & last month's rent (certified cheque, money order or bank draft)
- Current address & landlord info
- Current employment and verification of income
- Vehicle information
- Pet information
- One personal reference
- One emergency contact

To apply for one of our suites, contact:

Ashley Blommestyn, Rental Agent  
ashley@caraco.net  
(613) 546-6277 | CELL: (613) 536-8280



Plans, dimension and actual usable floor space are approximate and may vary. Some suites may be a mirror image (reversed) from the brochure. Subject to errors and omissions excepted.

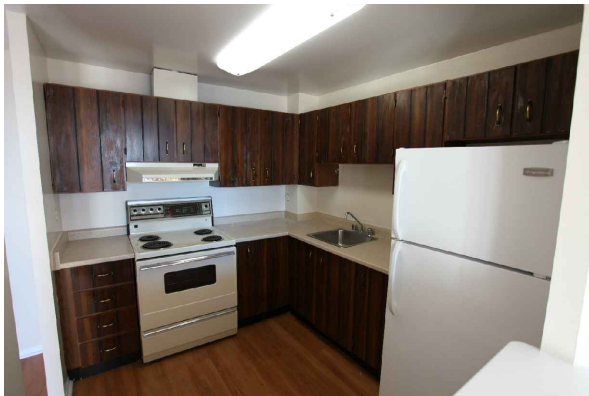
Full-time On-site Superintendent (613) 876-4031

# CATARAQUI RIDGE

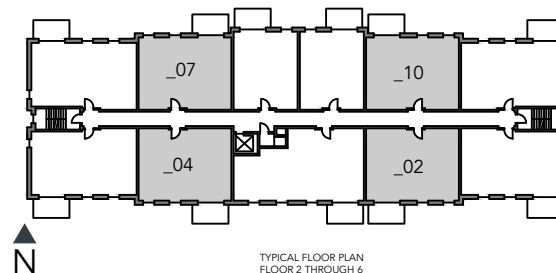
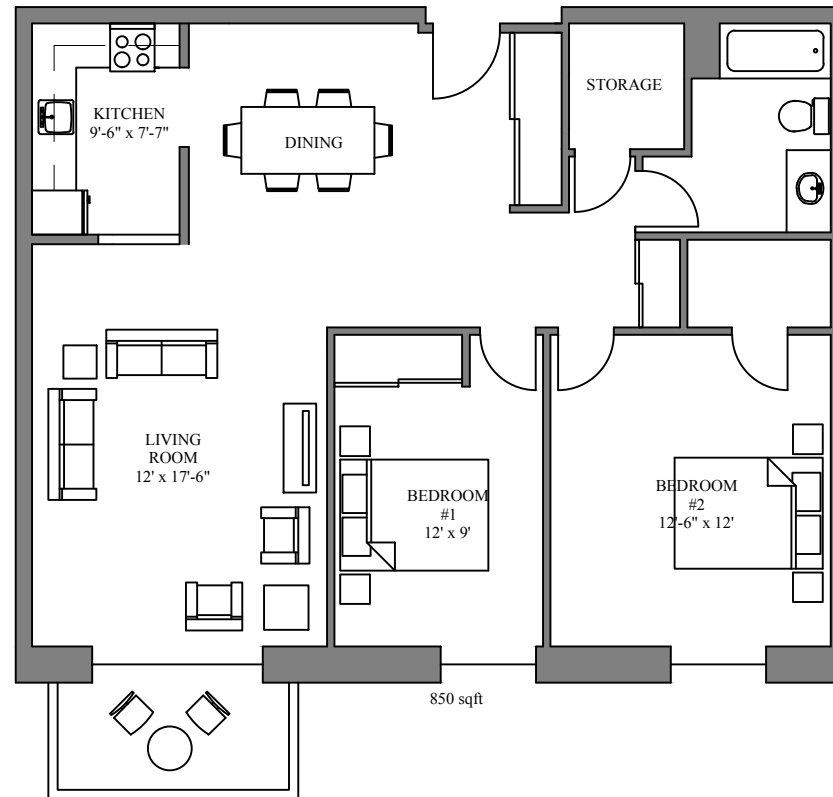
267 THE PARKWAY

PRICE:

AVAILABLE:



[WWW.CJMPROPERTY.NET](http://WWW.CJMPROPERTY.NET)



Plans, dimension and actual usable floor space are approximate and may vary. Some suites may be a mirror image (reversed) from the brochure. Subject to errors and omissions excepted.

## SUITE FEATURES

- 2 Bedroom + 1 bath
- Heat, water & electricity included
- Parking space included
- In-suite storage
- Private balcony
- Pet friendly
- New Elevator
- Laundry Facilities
- Wheelchair accessible

## APPLICATION

- 1-year lease
- First & last month's rent (certified cheque, money order or bank draft)
- Current address & landlord info
- Current employment and verification of income
- Vehicle information
- Pet information
- One personal reference
- One emergency contact

To apply for one of our suites, contact:

Ashley Blommestyn, Rental Agent  
ashley@caraco.net  
(613) 546-6277 | CELL: (613) 536-8280



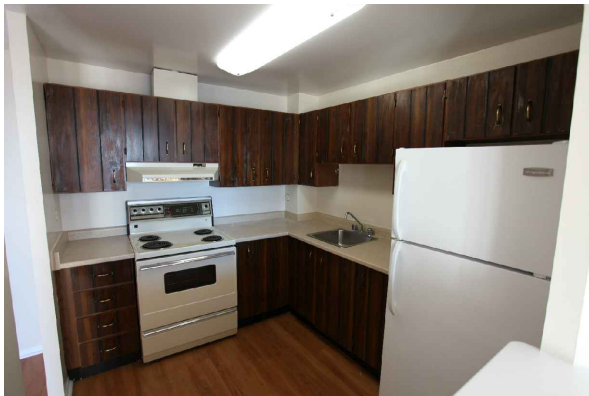
Full-time On-site Superintendent (613) 876-4031

# CATARAQUI RIDGE

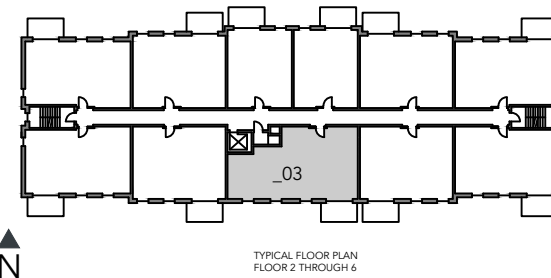
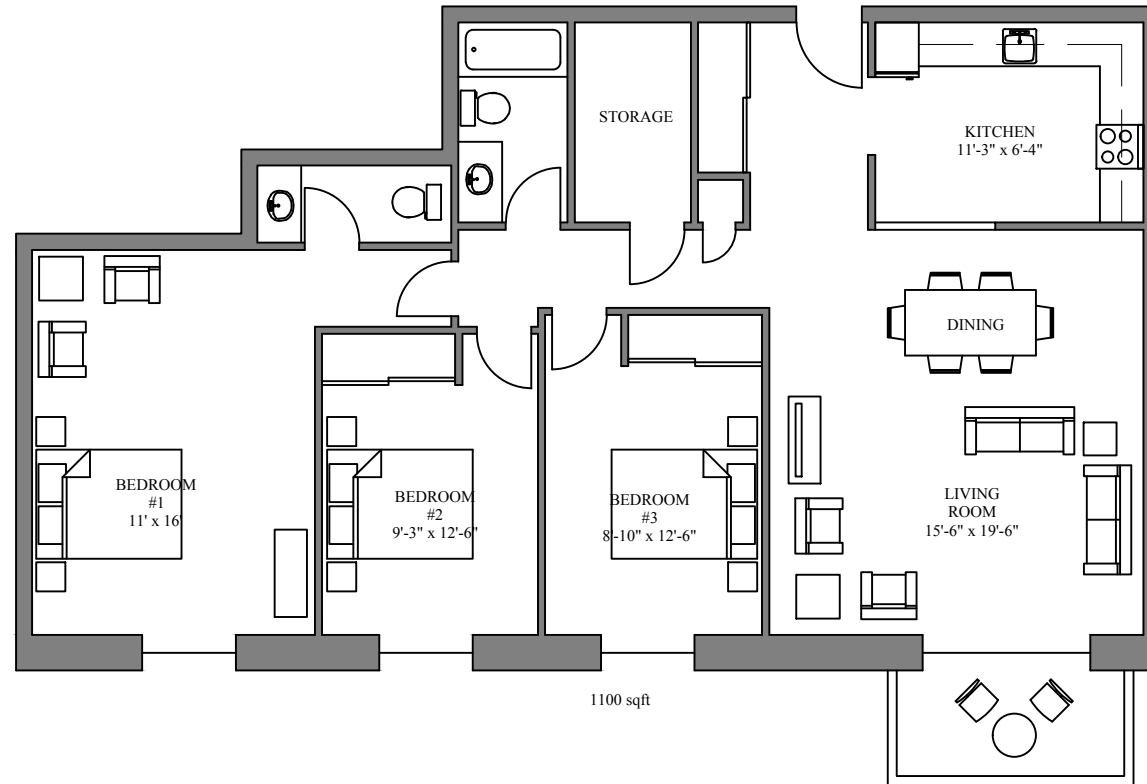
267 THE PARKWAY

PRICE:

AVAILABLE:



WWW.CJMPROPERTY.NET



Plans, dimension and actual usable floor space are approximate and may vary. Some suites may be a mirror image (reversed) from the brochure. Subject to errors and omissions excepted.

## SUITE FEATURES

- 3 Bedroom + 2 bath
- Heat, water & electricity included
- Parking space included
- In-suite storage
- Private balcony
- Pet friendly
- New Elevator
- Laundry Facilities
- Wheelchair accessible

## APPLICATION

- 1-year lease
- First & last month's rent (certified cheque, money order or bank draft)
- Current address & landlord info
- Current employment and verification of income
- Vehicle information
- Pet information
- One personal reference
- One emergency contact

To apply for one of our suites, contact:

Ashley Blommestyn, Rental Agent  
ashley@caraco.net  
(613) 546-6277 | CELL: (613) 536-8280



Full-time On-site Superintendent (613) 876-4031



# CATARAQUI RIDGE

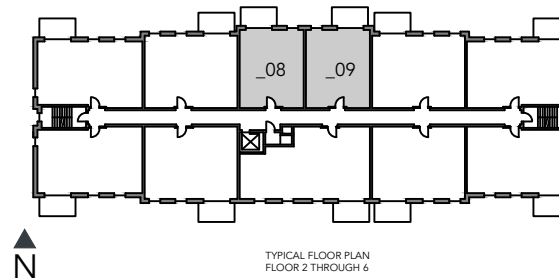
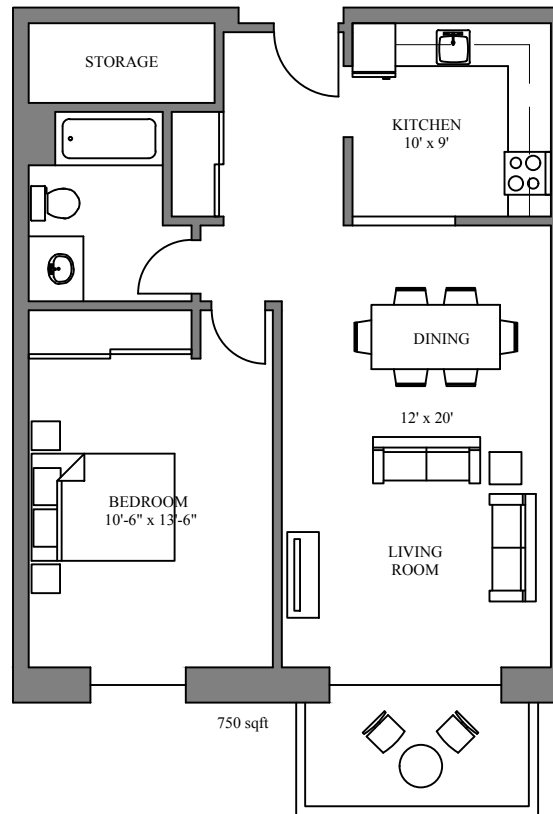
267 THE PARKWAY

PRICE:

AVAILABLE:



[WWW.CJMPROPERTY.NET](http://WWW.CJMPROPERTY.NET)



Plans, dimension and actual usable floor space are approximate and may vary. Some suites may be a mirror image (reversed) from the brochure. Subject to errors and omissions excepted.

## SUITE FEATURES

- 1 Bedroom + 1 bath
- Heat, water & electricity included
- Parking space included
- In-suite storage
- Private balcony
- Pet friendly
- New Elevator
- Laundry Facilities
- Wheelchair accessible

## APPLICATION

- 1-year lease
- First & last month's rent (certified cheque, money order or bank draft)
- Current address & landlord info
- Current employment and verification of income
- Vehicle information
- Pet information
- One personal reference
- One emergency contact

To apply for one of our suites, contact:

Ashley Blommestyn, Rental Agent  
ashley@caraco.net  
(613) 546-6277 | CELL: (613) 536-8280



Full-time On-site Superintendent (613) 876-4031